

PLASMA CUTTING

**AUTOCUT AW
201P**



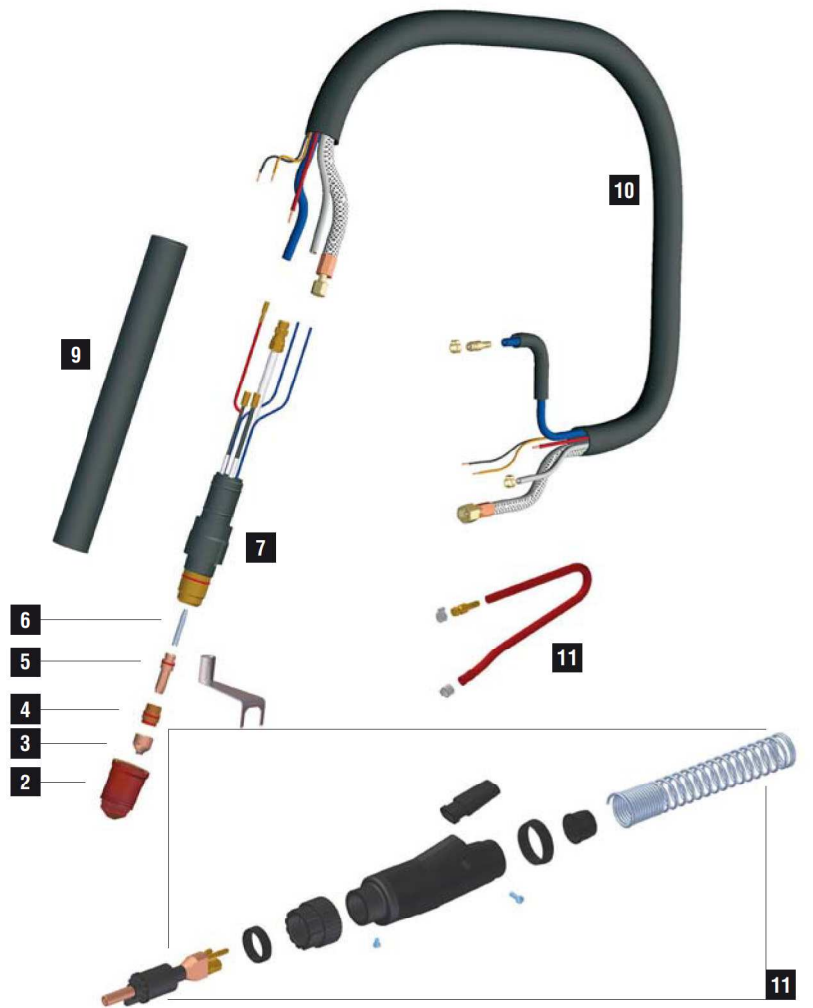
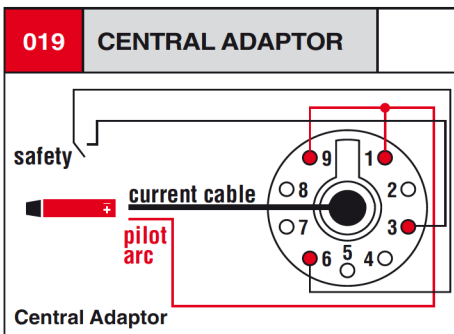
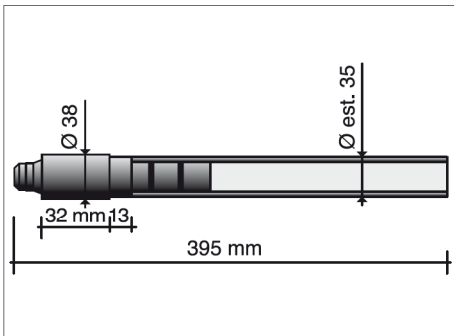
CE EN60974-7

CODE	↔	
------	---	--

PB0006	6 m	19.7'	 CENTRAL
PB0008	12 m	40'	

TECHNICAL DATA		
----------------	--	--

	HF	
	1,2 kg	2.65 lb
	500	
	4 bar	
	50 l/min	
	2÷4 bar	
	1.45 l/min	
	200A	
	40+50 mm	



	CODE		Ø		CONTACT		REF		
2	PC0126		long life		53 mm			2	
3	PD0115-10		60 A	1,0 mm	.040"	18,5 mm		-	10
3	PD0115-12		70 A	1,2 mm	.045"	18,5 mm		-	10
3	PD0115-14		100 A	1,4 mm	.052"	18,5 mm		-	10
3	PD0115-16		130 A	1,6 mm	1/16"	18,5 mm		-	10
3	PD0115-18		150 A	1,8 mm	5/64"	18,5 mm		-	10
3	PD0115-20		200 A	2,0 mm	5/64"	18,5 mm		-	10
3	PD0115-30		plasma tip	3,0 mm	1/8"	18,5 mm		-	10
4	PE0114			plasma diffuser				-	2
5	CV0080							1	
5	PR0118		plasma electrode		31,2 mm			10	
6	FH0866								

	CODE	
7	EA0203	
7	PG0006	
9	TP0061	
10	PH0058	
10	QB0048	
11	FE1132	
11	PT0024	

CODE	REPAIR KIT INCLUDED IN THE BOX		
PT0008		consumables kit	1
PT0013		grease for plasma consumables	1

STANDARD

CONTACT SHORT

CONTACT LONG